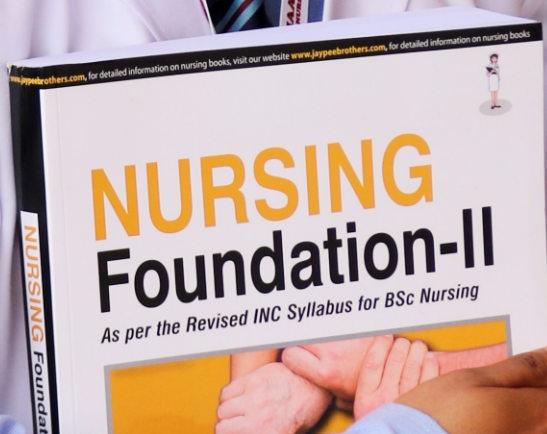




MAA AMBEY INSTITUTE of Nursing & Paramedical Sciences

Expand Your Horizon.
Discover The World Of Opportunities

मां अम्बे इन्स्टीट्यूट
ऑफ नर्सिंग एण्ड
पैरामेडिकल साइंसेज



www.maaambeyinstitute.org

Florence Nightingale

Pioneer of Modern Nursing



Born - 12 May 1820

Florence, Grand Duchy of Tuscany

Died - 13 August 1910 (Aged 90)

Park Lane, London, England

United Kingdom

Known For - Pioneering Modern Nursing

Signature *Florence Nightingale*

Medical Career :-

Profession - Nurse and Statistician

Institutions - Selimiye Barracks, Scutari

Specialism - Hospital Hygiene and Sanitation

FROM THE DESK OF CHAIRMAN



Nursing is a profession within the health care sector focused on the care of individuals, families, and communities so they may attain, maintain, or recover optimal health and quality of life. Nurses may be differentiated from other health care providers by their approach to patient care, training, and scope of practice. Nurses practice in many specialties with differing levels of prescription authority.

The authority for the practice of nursing is based upon a social contract that delineates professional rights and responsibilities as well as mechanisms for public accountability. In almost all countries, nursing practice is defined and governed by law, and entrance to the profession is regulated at the national or state level.

The aim of the nursing community worldwide is for its professionals to ensure quality care for all, while maintaining their credentials, code of ethics, standards, and competencies, and continuing their education

Maa Ambey Institute of Nursing & Paramedical Sciences has grown to be one of the best nursing & paramedical institute in the Kumaun (Hilly) region of Uttarakhand.

Our mission is to prepare graduates to assume responsibilities as professional competent nurses to providing rehabilitative medical services.

Our institute provides a healthy environment for productive learning and personal growth, professional development with state of the art, infrastructure, teaching faculty members, adequate and excellent classroom ,labs equipped with best quality equipments and library, clinical learning opportunities.

Good Luck !

Th. Sandeep Singh

FROM THE DESK OF VICE-CHAIRMAN



Nurses are 'the most trusted healthcare professionals.' They are with patients throughout the continuum of life. Nurses are teacher, advocates, caregivers, critical thinkers, and innovators.

Nursing is not just a job. Being a professional nurse means the patients in your care must be able to trust you, it means being up to date with best practice, it means treating your patients and colleagues with dignity, kindness, respect and compassion.

The scope of nursing is the range of roles, functions, responsibilities and activities which a registered nurse is educated, competent and has authority to perform. ... Nursing practice involves advocacy for the rights of the individual patient and for their family.

Our institute believes the student prepared for nursing & paramedical class will provide competent comprehensive nursing care in hospital and community and illustrate extraordinary skill and attitude in caring for individuals at all the levels of preventions and continue of health in the individual.

MAI is emerging as one of the major contributors in the Health Care Delivery System of Kumaun region through quality professional Nursing Education, Service and Research.

Good Luck !

Mrs. Preeti Pal



सा विद्या या विमुक्तये एवं सर्वे सन्तु: निरामया

“SA VIDYA YA VIMUKTAYE” & “SARVE SANTU NIRAMYAH”

A Vision Statement Describes The Aspirations Of An Organization. The Vision For The Nursing At “MAI” Is

"to Be Trusted Nurses Caring For Patients And Others, While Advancing Practice". A Set Of Values Are The Core Behaviors That Are Expected Of All Nurses Working Together To Achieve The Vision. The "circle Of Values" For Nursing Are Caring, Integrity, Respect, Commitment, Loyalty And Excellence.

Promote A Culture Of Scholarship And Contribution To The Discipline To Enhance The Profession And Knowledge Of Nursing.



“To succeed in your mission,
you must have single - minded devotion to your goal”

Hon'ble Late Dr. A.P.J. Abdul Kalam



To Promote Academic Excellence, Widen Intellectual Horizons, Inculcate Self-discipline And High Ideals For Total Personality Development Of Individual To Convert A Novice Into A Competent Professional With Skills And To Motivate The Interest In Research Activities Further Educational And Social Services.

AIMS & OBJECTIVES

The aim of the MAI is to prepare the graduate to assume responsibilities in preventive, promotive and curative care of the people, sick or well and to act as professional nurses. They are prepared to assume first level positions in all areas of health and are expected to participate in teaching and managerial function as well. The specific objectives are follows:

- Prepare nursing graduates to assume responsibilities in preventive. Primitive, curative & rehabilitative care of patients in hospital and community level.
- To meet the acute shortage of qualified nursing personnel in the country in general and Uttarakhand state particular.
- To promote and strengthen the nursing skills for better competence in the nursing profession in general and patient care in particular.
- Perform evidence – based nursing practice in order to improve the quality of patient care
- Analyze the issues relevant to professional nursing development and explore possible solutions scientifically.
- Implement effective pedagogical methodologies as applied to nursing practice and education.

ABOUT MAA AMBEY INSTITUTE



MAA AMBEY INSTITUTE OF NURSING & PARAMEDICAL SCIENCES, ALMORA (U.K.)

functions under the imperatives of “AHANA CHARITABLE TRUST” be Vikas Marg, Laxmi Nagar, New Delhi. It is a self financing institute in Uttarakhand state attached with 450 bedded multi specialty indoor hospitals, located in Almora city of Uttarakhand, It’s serenity and tranquility adds to the pleasure of learning. The institute has become a centre of excellence in Paramedical & Nursing education in North India.

The institute is housed in a beautiful building designed to capture the sky and the sun in the quiet environs of Almora. The present institute campus is spread over in an area of 30,000 sq.fts, which includes the administrative block, library, cafeteria, lecturer theatres and teaching laboratories of different departments and playground on the Makedi, Pithoragarh Road, Almora approx 5 kms. from main market. The campus includes boys and girls hostels & huge playground. The MAI is attached with Goverdhan Tiwari Govt. Base Hospital, Pt. Har Govind Pant District Hospital, Victor Mohan Joshi Female Hospital & Govind Singh Mahar Ranikhet, these are well equipped multi speciality indoor hospitals in Almora.

The Trust is also going to build its own 200 bedded multi specialty hospital named “**Tarun’s Karuna Multi Specialty Hospital & Wellness Centre**” which will start in Year 2025.

MAI is committed to the highest grade of equality education, imparting practical based training program in various degree & diploma courses.



LECTURE THEATRE

Lecture theatre is a large room used for instruction, Lecture theatre almost always have a pitched floor, so that those in the rear are sat higher than those at the front (i.e., tiered seating), allowing them to see the lecturer. Lecture theatre are excellent for focusing the attention of a large group on a single point, either an instructor or an audio-visual presentation, and modern lecture theatre often feature audio-visual equipment. Personal and social factors are also thought to determine students' lecture theatre seating choice and the resulting effects on attainment.



LIBRARY

The spacious and well – equipped library boasts of a voluminous collection of more than 3500 books, journals, and periodicals on array of subjects. A separate facility for accessing e-journals is also available in the library many international journals are also accessing.

PLAY GROUND

The institute has a spacious playground where students can practice various outdoor games. Sport's week is conducted annually where student compete in athletics, and other sports events.



FACILITIES OF OUR INSTITUTE



HOSTEL

One of the advantages of the institutes is that the hostel is within the campus. It has hygienic and fully furnished room and dormitories. Safe drinking water facility is available. All the rooms are having adequate number flight and fans. Dining room to accommodate forty students at a time with a hygienic kitchen pantry and storing facility. There is sufficient number of living rooms to accommodate all students.

Preferably not more than in a room. Bathroom and toilets sufficient in number (one for every 4 students) one visiting room with sitting arrangement and an attached toilet. One sick room to accommodate 2-4 students with toilet attached. Other facilities like hot water arrangement for winter. Hostel is having telephone connections.



TRANSPORTATION

The institutional buses are available for students to provide practical exposure in the hospitals & community.



FACILITIES OF OUR INSTITUTE

HOSPITAL

GOVERDHAN TIWARI GOVT. BASE HOSPITAL



PT. HAR GOVIND PANT DISTRICT HOSPITAL



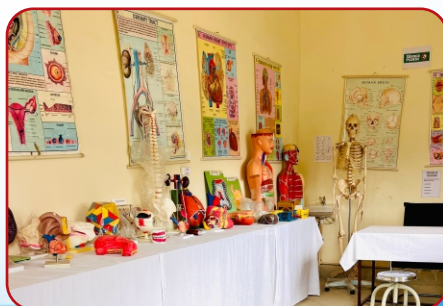
VICTOR MOHAN JOSHI FEMALE HOSPITAL



Govind Singh Mahara Govt Urban Hospital, Ranikhet



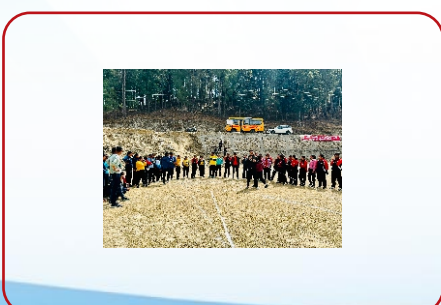
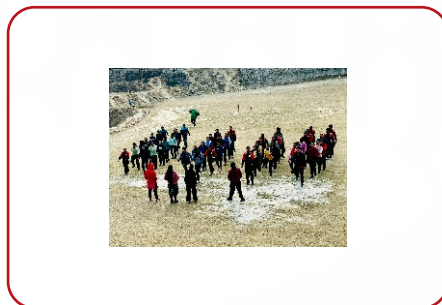
LABORATORIES



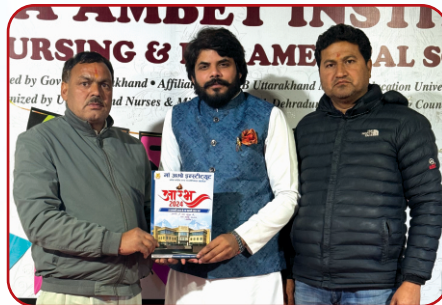


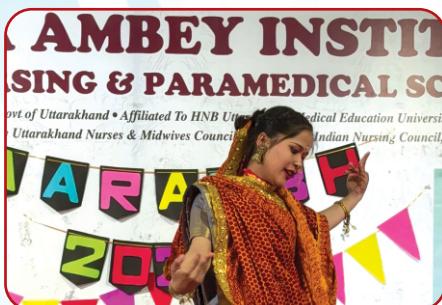
PROGRAMME











GENERAL NURSING & MIDWIFERY (GNM)



COURSE OVERVIEW

By choosing our GNM course you will be taking the first step towards a career in nursing. You will be entering a registered graduate profession with the potential for future career opportunities at local, regional, national and international levels.

Nurses work with old and young adults with diverse health conditions, both chronic and acute, within both hospital and community settings. An essential part of the role is the promotion of health through education, the prevention of disease and the care, sustenance and rehabilitation of adults undergoing diagnostic and therapeutic regimes.

What do nurses do? In the hospital, being a nurse will require you to work in surgical departments, operating departments, medical departments and in the intensive or high dependency care areas.

Nurses can be found working in many different areas of the community. Community nursing teams provide high quality professional care to the large number of patients cared for in their own home. Practice nurses are part of the team at the local GP surgery. Nurses also work in industry and commerce, providing health screening and support for the workforce. We believe that every individual should receive high quality nursing care that promotes health and well being, and

provides support when health is compromised. Our degree nursing course will promote your strengths and aspirations to become a registered nurse who can deliver and coordinate evidence based essential care, working in partnership with inter-professional health and social teams, voluntary agencies, community groups, statutory organizations, service users, carers and significant others and lead responses to the changing health care systems.

Our nursing course will require you to work with inter-professional teams in these settings to become competent at the skills and knowledge required to deliver high quality nursing care. You will also be required to successfully undertake and practice a range of theoretical assessments. At MAI the students go through practical hands-on training at hospitals in the regions. Students who have graduated from our institute are working in several major hospitals.



CURRICULUM

The course GNM broadly lays emphasis on the following key areas:

- Anatomy and physiology
- Psychology
- Fundamentals of nursing
- Personal hygiene
- Environmental hygiene
- Nutrition
- Medical surgical nursing – I
- Mental health and psychiatric nursing
- Midwifery and Gynaecological nursing
- Community health nursing – II
- Microbiology
- Sociology
- First Aid
- Community Health Nursing – I
- Health Education and Communication
- English
- Medical Surgical Nursing – II
- Computer in Nursing
- Gynaecological Nursing
- Paediatric Nursing

CAREER PROSPECTS

- GNM nurses are required across all hospitals for conduct of surgeries which include Hospitals, nursing homes, Multispecialist Clinics etc
- Other work arrangements are as private duty nurses, as resident nurses for private patients in nursing homes, extended health care facilities, daycare centres, public health agencies or in hospitals.
- Specialist nurses working in hospitals which render specialist medical services
- Nursing Aides / attendants work in hospitals, nursing homes and extended care facilities
- Work in emergency care



BASIC B.SC. NURSING

COURSE OVERVIEW

By choosing B.Sc Nursing course you will be taking the first step towards a career in nursing. You will be entering a registered graduate profession with the potential for future career opportunities at local regional national and international levels.

Nurses work with old and young adults with diverse health conditions, both chronic and acute, within both hospital and community settings. An essential part of the role is the promotion of health through education, the prevention of disease and the care, sustenance and rehabilitation of adults undergoing diagnostic and therapeutic regimes. What do nurses do? In the hospital being a nurse will require you to work in surgical departments, operating departments, medical departments and in the intensive or high dependency care areas, nurses can be found working in many different areas of the community. Community nursing nurses provide high quality professional care to the large number of patients cared for in their own home. Practice nurses are part of the team at the local GP surgery. Nurses also work in industry and Commerce, providing health screening and support for the workforce.

We believe that every individual should receive high quality nursing care that promotes health and well being and provide support when health is compromised. Our degree nursing course will promote your strengths and aspiration to become a registered nurse who can deliver and co-ordinate evidence based essential care, work in partnership with inter-professional health and social teams. Voluntary agencies, community groups, statutory organizations service users, careers and significant others and lead and respond to the changing health care system. Our nursing course will require you to work with inter-professional teams in these settings to become competent at the skills and knowledge required to deliver high quality nursing care. You will also be required to successfully undertake and practice a range of theoretical assessments.



CURRICULUM

The course B.Sc. Nursing broadly lays emphasis on the following key areas:

- Anatomy & Physiology
- Microbiology
- Psychology
- Sociology
- Nursing Foundation
- First Aid
- Personal Hygiene
- Community Health Nursing - I
- Environmental Hygiene
- Health Education & Communication Skills
- Nutrition
- English
- Medical Surgical Nursing - I
- Medical Surgical Nursing - II
- Psychiatric Nursing
- Computer in Nursing
- Obs. & Gynaecological Nursing
- Community Health Nursing - II
- Paediatric Nursing

CAREER PROSPECTS

- B.Sc. Nursing Graduate Nurses are required across Hospitals, Nursing homes, Multi-specialist clinics and hospitals etc.
- Other work arrangements are as private duty nurses, as resident nurses for private patients in nursing homes, extended health care facilities, daycare centres, public health agencies or in hospitals.
- Specialist nurses work in hospitals which render specialist medical services. Nurses aides / attendants work in hospitals, nursing homes and extended care facilities.
- Work in emergency care.

P.B. B.Sc. Nursing



COURSE OVERVIEW

Post Basic B.sc. Nursing (P.B. B.sc.) Is A Two - Year Undergraduate Programme Designed To Inculcate An Indepth Understanding Of Advanced Level Nursing. Under This Programme, Aspirants Brush Up Their Learning To Provide Complete Medical Care To The Patients Th Students Acquire Both Surgical And Non - Surgical Nursing Skills That Prepare Them For Varied Real - World Clinical And Hospital Settings. The Programme Prepares Students To Take Independent Decisions In Nursing Situations And Play A Major Role In Treating Patinets With Care And Compassion. The Programme Curriculum Comprises Subjects Like Maternal Nursing, Medical & Surgical Nursing, Microbiology And Health Nursing.

The Broad Area Of The Study Involves Introduction To Nursing Research & Statistics Which Enables Them To Solve Problems Related To Nursing Using Scientific Methods. The Programme Transmutes Students To Industry-trained Professionals With A Strong Understanding Of The Philosophyobjectives And Responsibilities Of Nursing As A Profession

- Post Basic B.sc. Nursing Graduate Nurese Are Able To Provide Promotive, Preventive, Curative, And Restorative Health Services In Line With The National Health Policies And Programs.
- Post Basic B.sc. Nursing Graduate Nurese Have Critical Thinking Skills In Decision Making In All Situations And Will Utilize The Latest Trends And Technologies To Provide Quality Health Care & Recognize The Need For Continued Learning For Their Personal And Professional Develoment
- Post Basic B.sc. Nursing Graduate Nurese Are Able To Minimize Risk Of Harm To Patients And Providers Through Both System Effectiveness And Individual Performance & Able To Function Effectivelt Within Nursing And Interdisciplinary Teams For Providing Quality Patient Care



CURRICULAM

1ST YEAR

- NURSING FOUNDATION
- NUTRITION & DIETETICS
- BIOCHEMISTRY & BIOPHYSICS
- PSYCHOLOGY
- MATERNAL NURSING
- CHILD HEALTH NURSING
- MICROBIOLOGY
- MEDICAL & SURGICAL NURSING
- ENGLISH

2ND YEAR

- SOCIOLOGY
- COMMUNITY HEALTH NURSING
- MENTAL HEALTH NURSING
- INTRODUCTION TO NURSING EDUCATION
- INTRODUCTION TO NURSING ADMINISTRATION
- INTRODUCTION TO NURSING RESEARCH & STATISTICS

CAREER PROSPECTS

Staff Nurse, Nursing Service Administrators, Director Of Nursing

Department Supervisor, Nursing Supervisor Or Ward Sister, Nursing Superintendent

Community Health Nurse (chn), Home Care Nurses, Military Nurse

Deputy Nursing Superintendent, Teacher Of Nursing, Assistant Nursing Superintendent



COURSES ELIGIBILITY CRITERIA

COURSE'S DETAILS

Course Name	Duration	Eligibility
NURSING COURSE		
General Nursing & Midwifery (GNM)	3 yrs	10+2 (12th) with min. 50% marks & English subject compulsory
Basic B.Sc. Nursing	4 yrs	10+2 (12th) PCBE with min. 50% marks
Post Basic B.Sc. Nursing	2 yrs	Diploma In GNM with Min 50 Marks



ANTI RAGGING COMMITTEE



AIM

"RAGGING LEADS TO TEARS, SHAME, TERROR AND SOMETIMES DEATH"

To root out ragging in all its forms from the Institution by instituting stringent anti-ragging measures and provisions for strict punishments to defaulters.

Anti Ragging Policy

Ragging is an offence in any form and is totally prohibited in and outside the campus of MaaAmbey Institute of Nursing & Paramedical Sciences, Almora This rule applies to the campus, hostels, college transportation and outside the institute's premises too. We want to ensure and are committed to create a "ragging free" institution, thus ensuring a serene atmosphere

What Constitutes Ragging?

As defined by the UGC, Ragging constitutes one or more of any of the following acts:

- Any conduct by any student or students whether by words spoken or written or by an act which has the effect of teasing, treating or handling with rudeness a fresher or any other student.
- Indulging in rowdy or indiscipline activities by any student or students which causes or is likely to cause annoyance, hardship, physical or psychological harm or to raise fear or apprehension thereof in any fresher or any other student.
- Asking any student to do any act which such a student will not in the ordinary course do and which has the effect of causing or generating a sense of shame, or torment or embarrassment so as to adversely affect the physique or psyche of such fresher or any other student.
- Any act by a senior student that prevents, disrupts or disturbs the regular academic activity of any other student or a fresher.
- Any act of financial extortion of forceful expenditure burden put on a fresher or any other student by students.
- Any act of physical abuse including all variants of it: sexual abuse, homosexual assaults, stripping, forcing obscene and lewd acts, gestures, causing bodily harm or any other danger to health or person.
- Any act or abuse by spoken words, emails, post public insults which would also include deriving perverted pleasure, vicarious or sadistic thrill from actively or passively participating in the discomfiture to fresher or any other student.
- Any act that effects the mental health and self-confidence of a fresher or any other student with or without an intent to derive a sadistic pleasure or showing off power, authority or superiority by a student over any fresher or any other student.

Punishment that may be awarded for Ragging

Every incident of ragging will be investigated by the Discipline Committee Head who will go into the details and submit all relevant information to the Principal along with their findings and recommendations.

Further, the Discipline Committee of MAI will, depending on the nature and gravity of the guilt established by the Committee, award, to those found guilty, one or more of the following punishments, namely:

- Suspension from attending classes and / or academic privileges
- Withholding / withdrawing scholarship / fellowship and other benefits
- Debarring from appearing in any test / examination or other evaluation process
- Debarring from representing the institution in any regional, national or international meet, events, tournament, youth festival, etc
- Suspension / expulsion from the hostel
- Rustication from the institution
- Fine submission

Following measures are taken by the institution to prevent ragging :

- Written notice expressing that ragging is totally prohibited in institution.
- Those who found guilty of ragging/ abetting ragging, actively or passively or being part of a conspiracy to promote ragging is liable to be punished in accordance with these regulations as well as under the provisions of any penal law for the time being in force. Members of Anti ragging committee at the college and the university are following:

Anti-ragging Squad:

- The members of the squad will visit at least twice in a week all potential areas of ragging on or outside the campus
- The squad conducts surprise visits/raids on hostels and other hot spots of ragging and apprehends the culprits.
- It shall record all verbal/telephonic/written complaints and take action as stipulated in the bye-laws of the university.
- It shall keep the principal informed of all events/occurrences of ragging in the college.
- Anti-ragging squad will be assisted by members of college teaching staff detailed by the office of the principal on day to day basis to keep vigil on untoward events.

For any kind of information and assistance, please feel free to contact any of the following members:-

NATIONAL ANTI RAGGING HELPLINE NO.

1800-1805522

MAI ANTI RAGGING HELPLINE NO.

+91 - 7311133333



COLLEGE RULES & REGULATIONS

ACADEMIC

- Students need to be punctual for theory classes and clinical practice according to the schedule given by the institution.
- College timings are 10:00 AM to 04.00 PM. The timings may change according to clinical postings. The change will be intimated timely.
- Students have to submit all assignments exactly on specified dates except in genuine unavoidable circumstances with prior permission.
- No re-examination will be conducted for those who fail in the sessional examinations.
- Re-examination of the sessional examinations will be conducted for the students who are absent due to sickness which is supported by authentic Medical Certificates or students who are absent because of some serious problems/ needs at home, which requires their presence. This decision will be made by the college authority.
- 80% attendance of the total number of theory classes taken.
- 80% attendance in the clinical experience hours in the clinical subjects (20% of the clinical experience hours must be compensated before commencement of the next academic year).
- (As per the Indian Nursing Council regulations, 100% of the clinical experience hours have to be completed before starting the classes for the next higher class. The degree will not be granted unless and until 100% clinical experience hours are compensated during the stipulated period).
- Students are not allowed to use mobile in the college premises, during the class hours or during the clinical experience hours. If found, the mobile will be confiscated.
- Students must maintain discipline in the classroom and in the college premises so as to ensure a peaceful and conducive atmosphere for learning in the college.

CODE OF CONDUCT

- Students are not allowed to paste notices within the Institution and are forbidden to communicate with any outside authority directly. All such communications must be submitted through the Principal who will forward these if considered desirable. Any students infringing this rule will be suspended.
- Strictly forbidden in any part of institution are:
 - The possession or use of alcoholic beverages,
 - The possession or use of addictive drugs.
 - Gambling.
 - The possession or use of firearms or any lethal weapons.
 - Loitering around unnecessarily.
 - Use of mobile phone during duty/class hours.
- Ragging of any student is prohibited and may result in rustication or expulsion from the Institute. "Ragging is any disorderly conduct whether by words spoken or written or by an act which has the effect of teasing, treating or handling with rudeness to any student, indulging in rowdy or undisciplined activities which cause or likely to cause annoyance, hardship or psychological harm or to raise fear or apprehension thereof in a fresher or a junior student and which has the effect of causing or generating a sense of shame or embarrassment so as to adversely affect the psyche of a fresher or a junior student."
- All fees must be paid in full by the dates notified time to time. Any student, whose fees, together with the fine imposed, remains unpaid, will be suspended from attending lectures, practical, clinics etc. until the fees/ dues have been paid.
- All neglect of duties, breach of rules and acts of indiscipline are to be brought to the notice of the Principal. The Principal in consultation with the senior staff members shall deal with any serious offence for which adverse entry in the personal file of the student may be made.
- The decision of the Principal in all disputes would be final and binding on to the students.

HOSTEL RULES & REGULATIONS

- All the students are instructed to be physically present for the night attendance. In case of medical reasons concerned student or roommate/friend(s) has to inform the Hostel in-charge/caretaker and which should be verified by the hostel in-charge.
- Illness must be reported to the hostel in-charge timely and she should bring the matter to Principal's/Class coordinator's notice at the earliest.

MESS RULES

- Students are not permitted to take food in their rooms. Breakfast, lunch and dinner should be taken in the mess/dining room only.
- The college authorities should not receive any complaints from anyone including Hostel management/other residents on this matter like wastage of food leading to uncleanliness in the hostel premises which may attract flies/monkeys. If the college authority receives any complaint on the above said matter this privilege will be withdrawn without any further notice.
- Students should stick on to the mess timings in order to avoid inconvenience to the mess workers and other hostel inmates.

The Timings will be as follows:

Meals	Timings
Breakfast	08:00 AM - 09.00 AM
Lunch	01:00 PM - 02.00 PM
Tea	05:00 PM - 05.30 PM
Dinner	08:00 PM - 09.00 PM

Breakfast and lunch timings are tentative and may change according to change in college timings (changes will be intimated timely).

DISCIPLINE

- The entire students should remain in their own rooms after 11.00 PM. No student is permitted to roam around in the corridor after 11.00 PM. However the students are permitted to use common room only for group study purpose at any time without causing disturbance to other inmates.
- Students are instructed to switch off the lights and fans before leaving the room. No electric stoves, room heaters or other electric appliances of electric consumption will be allowed in the hostel.
- Students themselves are responsible for their personal belongings. Neither hostel in-charge nor the college authorities will be responsible if anything is lost.
- Students are instructed to keep hostel room and its premises neat and clean.
- They are not permitted to write, paste or hang anything on the hostel walls or doors. Principal or hostel in-charge will conduct timely inspection and if anyone is found to be guilty they will be punished.
- Students should handle all the hostel equipments carefully. If anything is found to be damaged or missed the same has to be replaced by the students themselves.
- Students are permitted to watch TV up to 10.00 PM on all days without causing any sort of disturbance to others.
- All students should reach class/college/clinical duty 5 minutes before.

USE OF MOBILE PHONES

- Students are not permitted to use mobile phone in hostel corridor as it may cause inconvenience/disturbance to other inmates. However all are permitted to use mobile phone in their own rooms with parent's permission (in written and a copy of the same should be submitted to the college authorities).
- Use of mobile phones is strictly prohibited in the college or hospital premises.

OUTINGS

- Students are permitted to go home only on scheduled holidays (which have been intimated to the students).
- Any emergency condition will be considered and permission will be granted by the Principal after conferring the matter with the respective class coordinators.
- No student will be allowed to go out of hostel without prior information to the hostel warden/ class coordinator/in-charge along with Principal under any circumstances. (A written consent/undertaking from parent/guardian is to be submitted for the same)
- When going home during scheduled holidays/vacations students are permitted to go alone after providing a written consent/undertaking from parent/guardian.

VISITING RULES

- Only those visitors whose photos are attested by the parents in the hostel visitors register will be permitted to meet the students both in hostel and college premises.
- Visitors will be allowed to meet the students during visiting hours only.
- Visiting Time (Hostel):
05:00 PM - 06:00 PM - Monday to Saturday
09:00 AM - 05:00 PM - Sunday
- Students should not cause any sort of disturbance to other inmates or visitors/ parents during visiting hours.
- No visitor will be permitted inside the hostel rooms.

LIBRARY RULES

- Silence and order must be maintained in the library at all times. Infringement of the rules will be suitably dealt with.
- Any person who loses, defaces the book will be required to be charged at the ongoing rate, along with a fine. In case the book is one of a set or series, the cost of the entire set or series will be recovered if the lost/ damaged copy is not available individually.
- Books/Periodicals required for occasional reference, including encyclopaedias', rare books and journals are not to be issued.
- Books borrowed from the library are not transferable.
- Books will be issued strictly on priority of demand.
- After having deposited the required security, students are allowed to borrow two books at a time.
- Students may keep the books up to a maximum of 14 days. After that for each succeeding day that a book is overdrawn a fine will be charged till the book is returned to the library.
- Every borrower shall be issued a Borrower's card which will be stamped by the librarian each time a book is issued or returned. If the card is lost, a duplicate can be purchased from the office on a payment of Rs. 20/-.
- The Card placed in the pocket at the end of the book must be delivered to the librarian before the book is taken away.
- All books must be returned to the library before the annual stock checking in June. Student who fails to return the book (s) will be charged Rs. 5/- per day per book, till the book is returned to the library.
- Periodicals, Publications and newspapers for the student section of the library are placed on the tables. These must not be taken away under any circumstances. Cutting of items from newspapers/ magazines is also strictly prohibited.
- The borrower must make his/ her own arrangement for carrying the books to and from the library.
- All new books and journals will be kept in a separate almirah for a fortnight for comments and suggestions.
- Current journals will not be issued till the time next issue reaches the library. Up to two journals can be issued to the teaching staff for overnight use.
- Individual departments are permitted to maintain their departmental libraries of highly technical books of utility mainly to the department concerned. Additional copies of these books will be available in the Institution library. The departmental libraries will be open to all staff members.
- Bound volumes of journals will be treated as books.
- Books may be renewed on request at the discretion of the librarian.
- Library timing is subject to variation depending on the requirements.

+ Academic

Creative +

+ Excellence



“Perfection can only be a result of constant care, attention and preservance. Keeping this is mind, MAI ensures that each student can be dealt with utmost patience and care, developing them into responsible global citizens.”

📍 Makedi, Pithoragarh Road, Almora, Uttarakhand - 263601

Calls for Details: 8171853331, 8171083331 📞 Registration Helpline: 7302423333

✉️ maaambeyinstitute3gmail.com 🌐 www.maaambeyinstitute.org